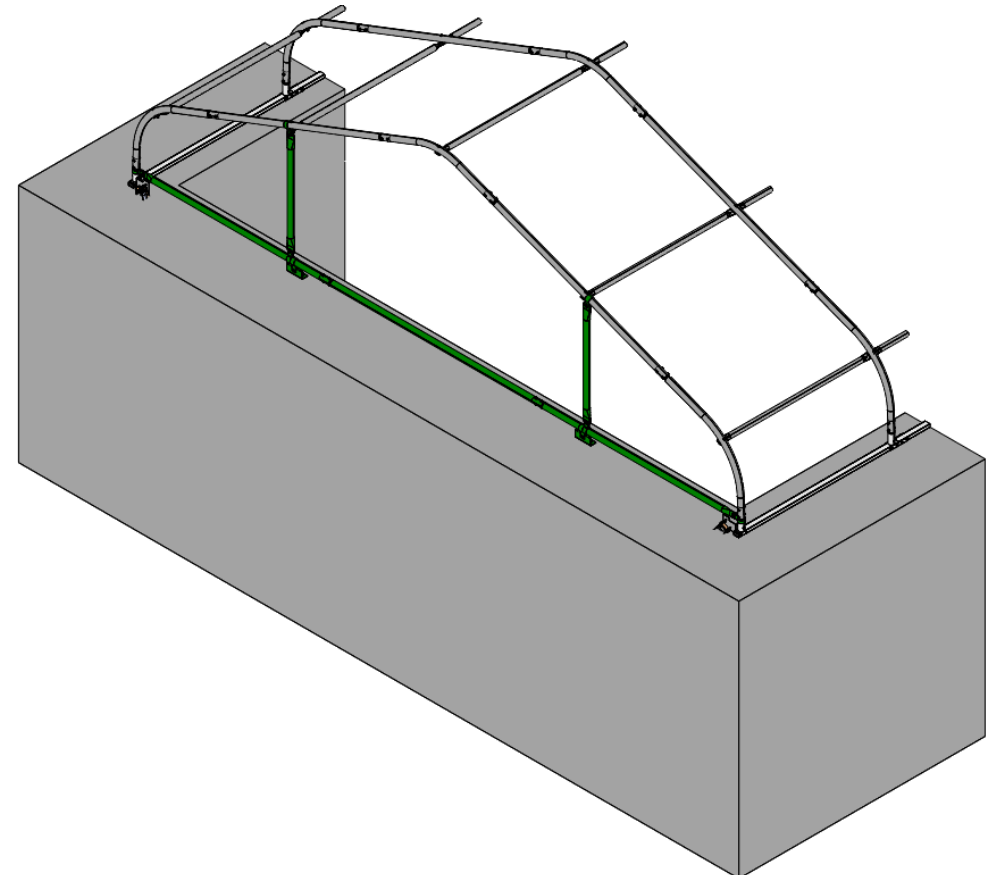
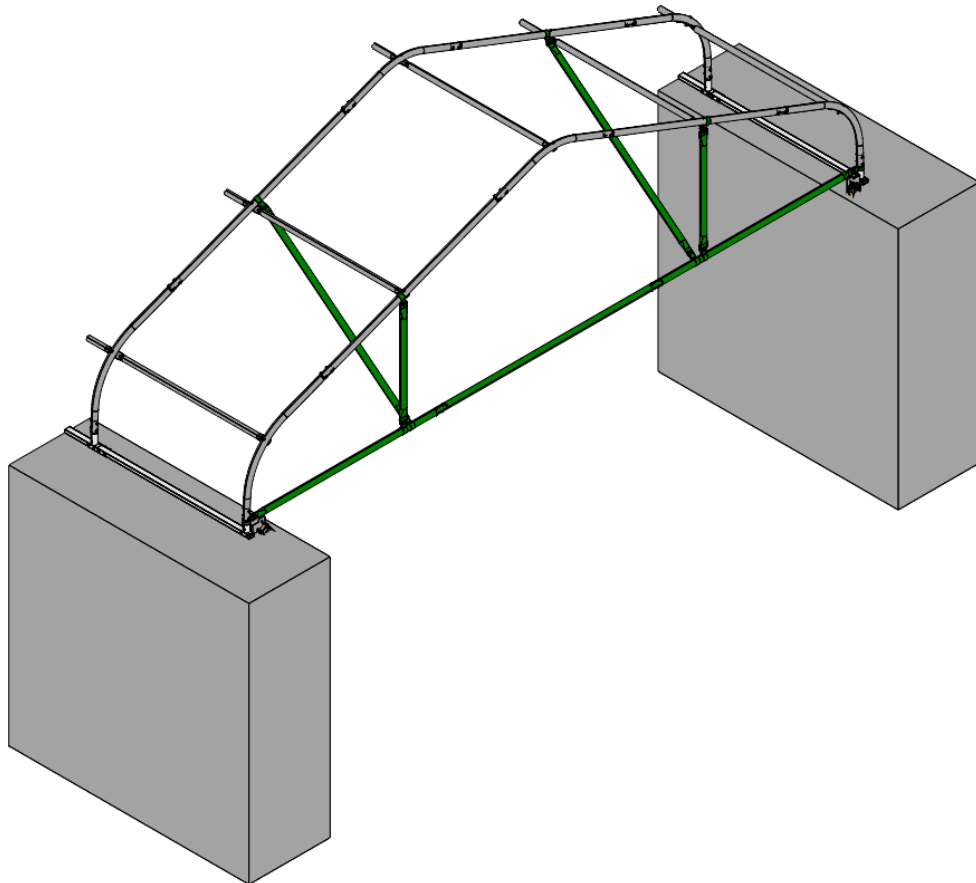


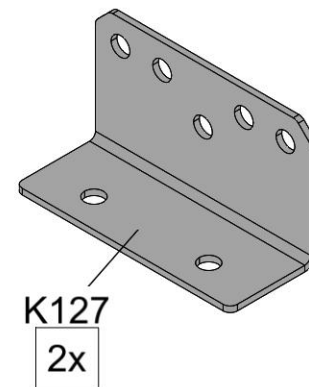
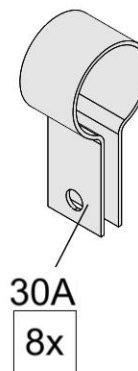
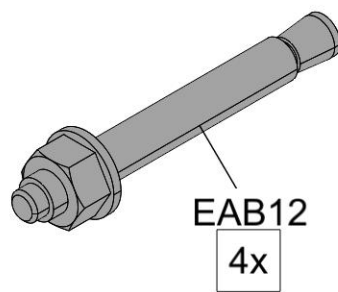
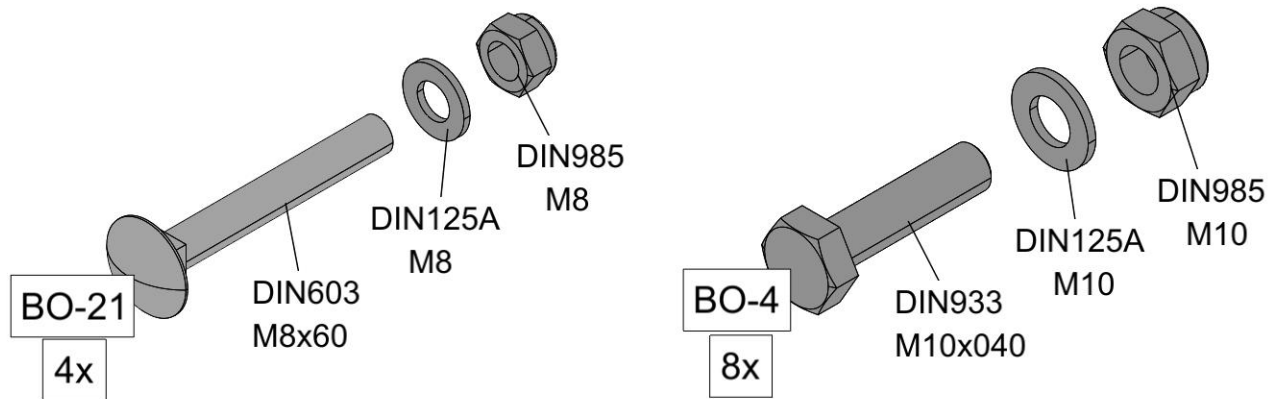
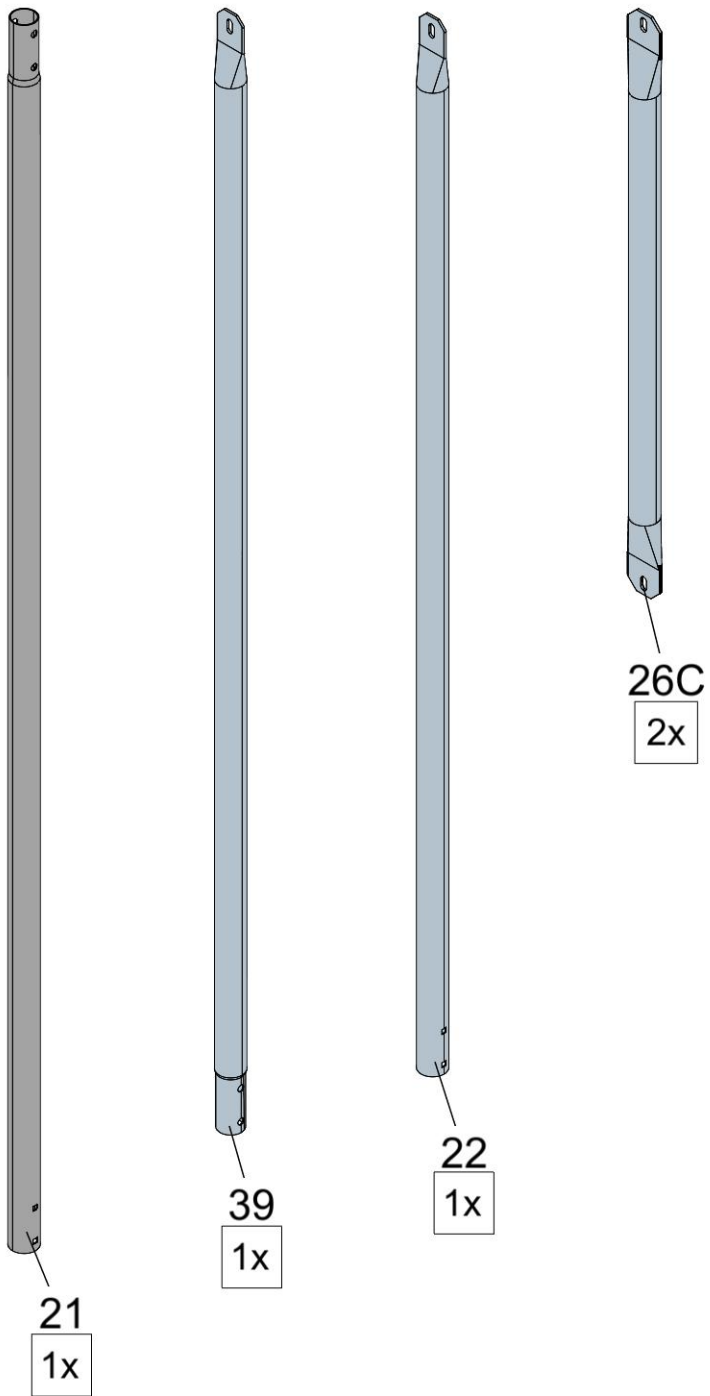
KROFTMAN CT-S-HS-600 / CT-S-H-600




Assembly manual for suspended and unsuspended half end wall frame

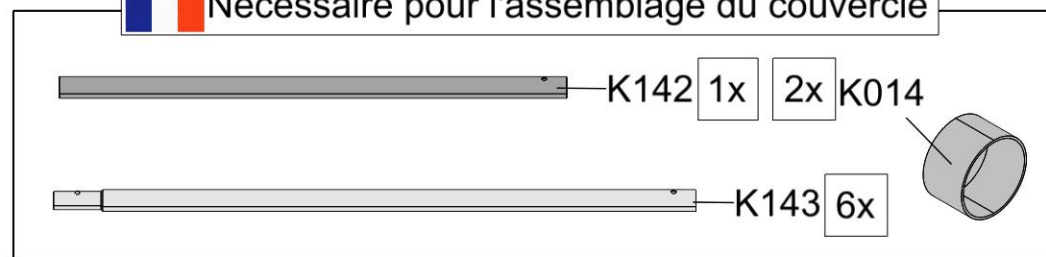
Montageanleitung für aufgehängte und nicht aufgehängte Halbstirnwandzargen

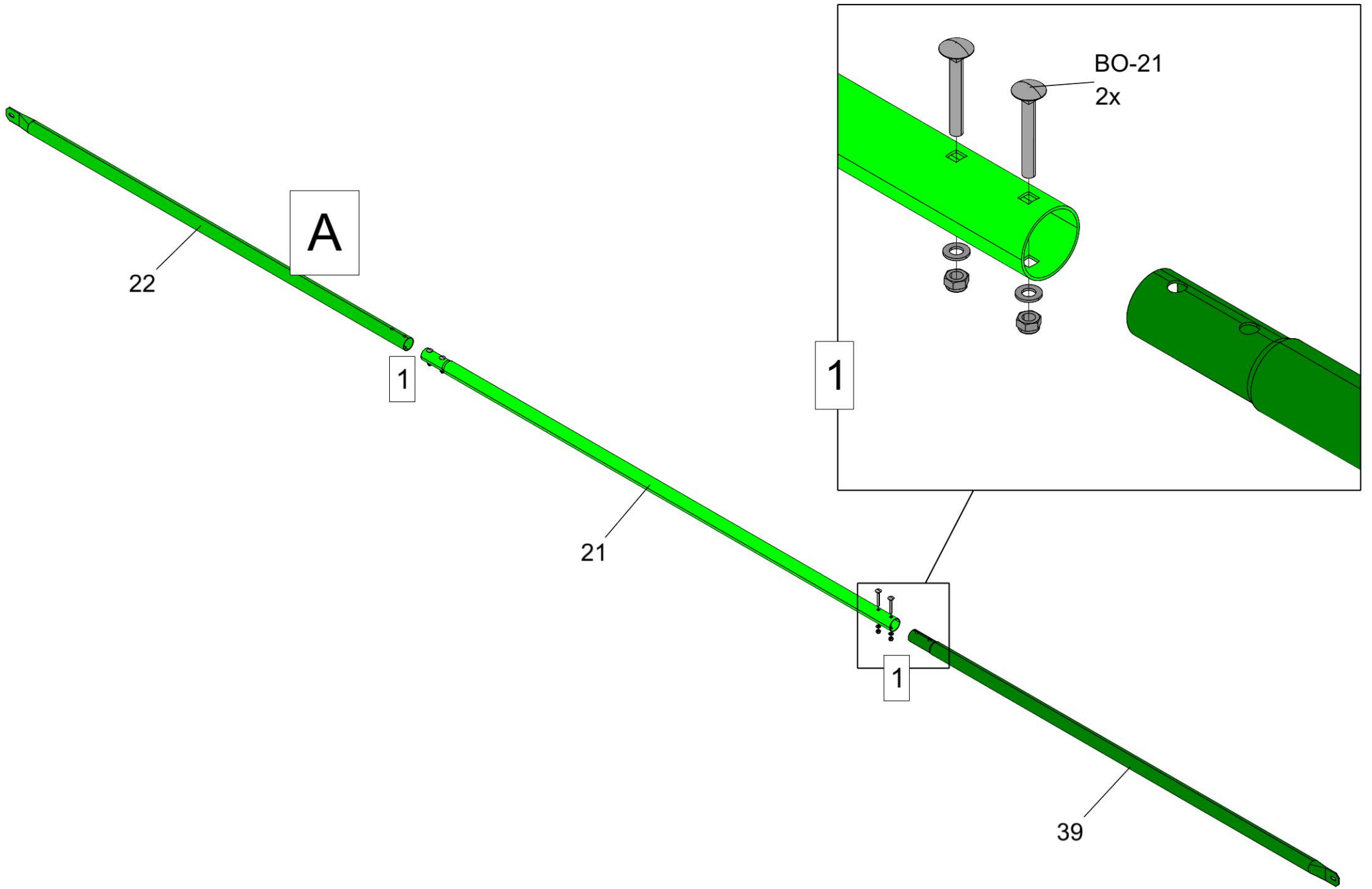
Manuel d'assemblage pour le cadre mural suspendu et non suspendu en demi-lune



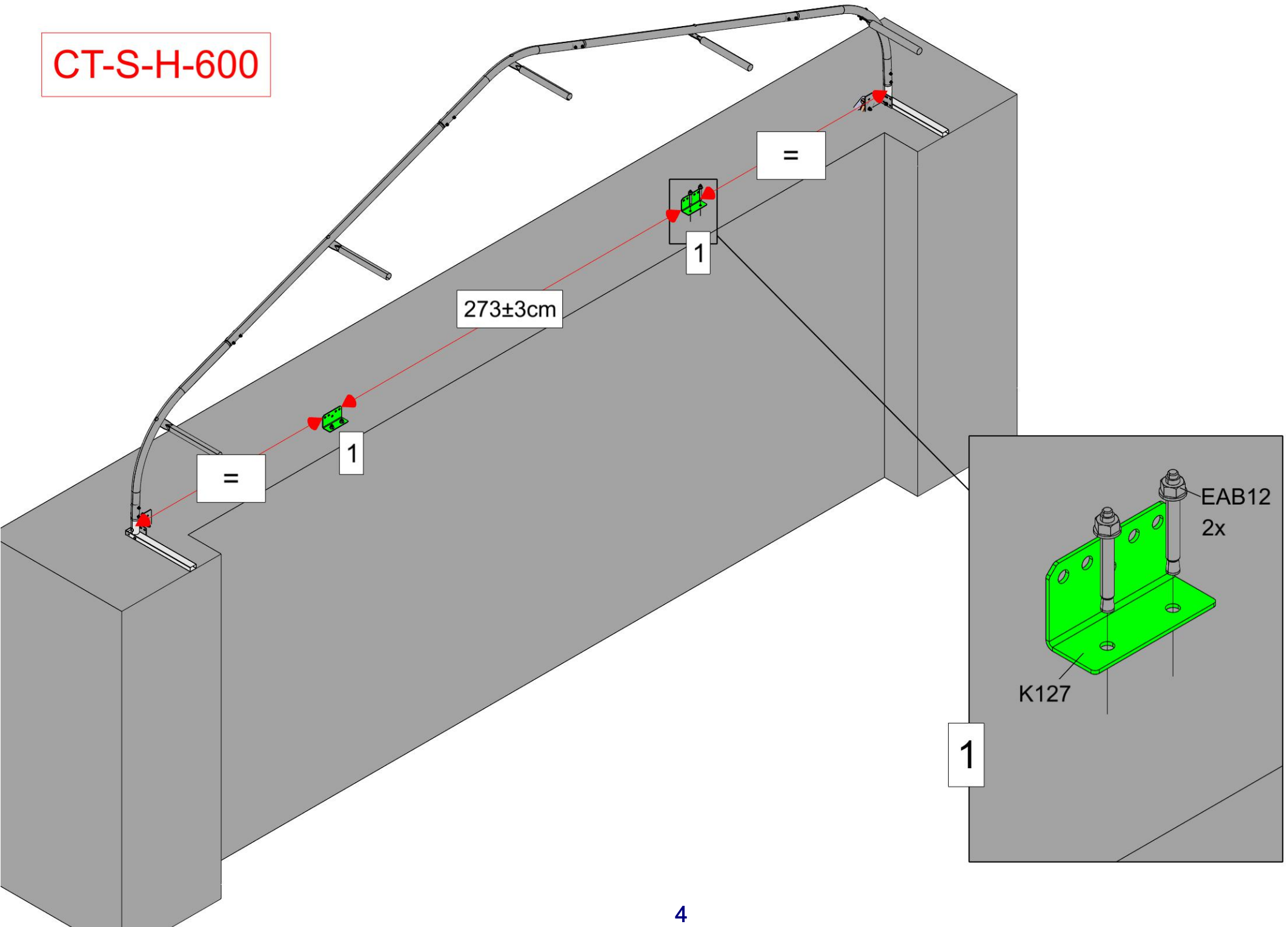


 Needed for cover assembly
 Erforderlich für die Montage der Abdeckung
 Nécessaire pour l'assemblage du couvercle

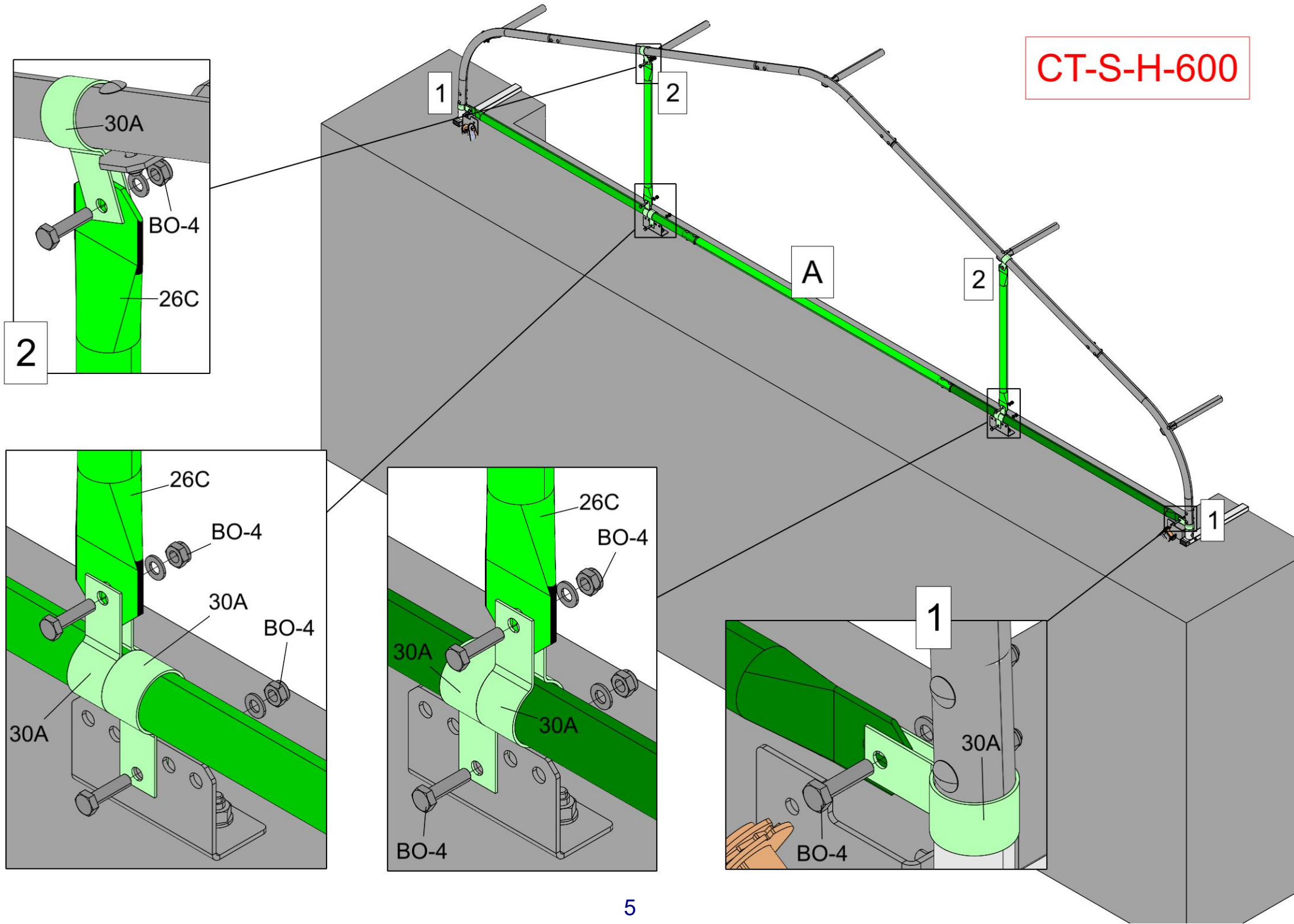




CT-S-H-600



CT-S-H-600



CT-S-HS-600

